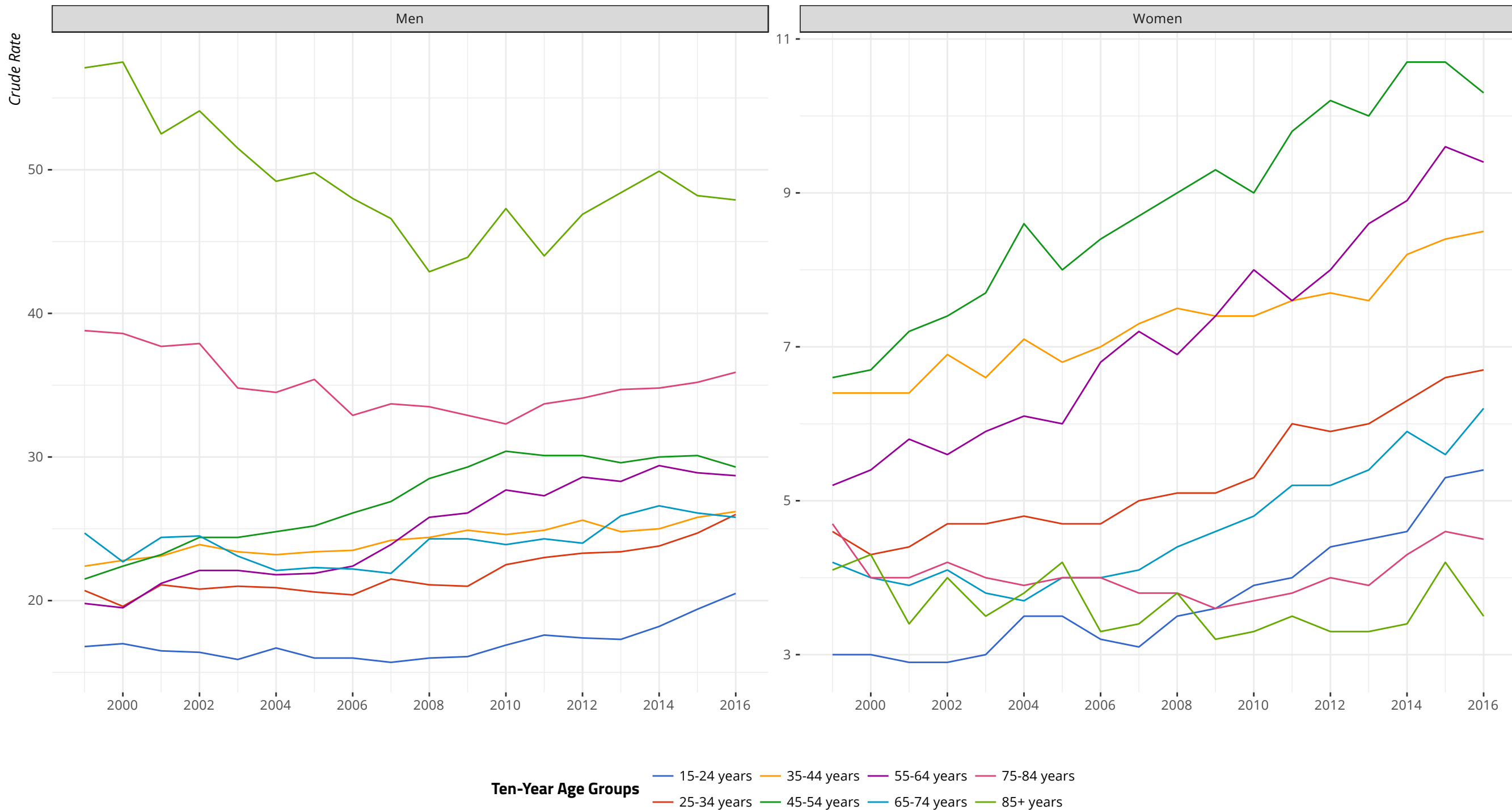


Men Are More Likely to Commit Suicide Than Women, but Women Might Be Driving the Nationwide Rise in Suicides

The percentage change among some age groups for women are quite stark. For example, the suicide rate for 15-24 year-old women rose 80% from 1999 to 2016.



Data: Centers for Disease Control, which I *really* wish had a friendlier API.